

Product data sheet

Miniature connectors

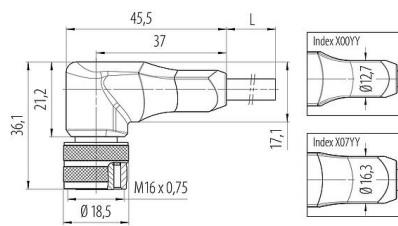


| | |
|---------------------|--|
| Product description | M16 Female angled connector, Contacts: 6, unshielded, moulded on the cable, IP68, PUR, black, 6 x 0.25 mm², 5 m |
| Area | series 425 |
| Part no. | 77 6434 0000 50006-0500 |

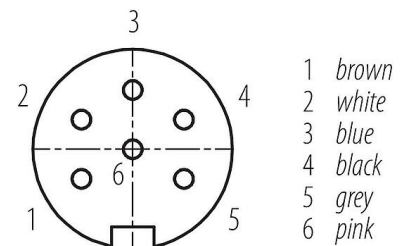
Illustration



Scale drawing



Contact arrangement (Plug-in side)



Technical data

General features

| | |
|---------------------------|---|
| Part no. | 77 6434 0000 50006-0500 |
| Connector design | Female angled connector |
| Cable length | 5 m (Standard 2 m and 5 m. Other lengths are available on request.) |
| Version | Connector socket angled |
| Connector locking system | screw |
| Termination | moulded on the cable |
| Degree of protection | IP68 |
| Cross-sectional area | 0.25 mm² / AWG 24 |
| Temperature range from/to | -25 °C / 85 °C |
| Mechanical operation | > 1000 Mating cycles |
| Weight (g) | 0.00 |
| Customs tariff number | 85444290 |
| Country of Origin | DE |

Electrical parameters

| | |
|---------------------------|-----------------------|
| Rated voltage | 150 V |
| Rated impulse voltage | 1500 V |
| Rated current | 3,0 A |
| Insulation resistance | $\geq 10^{10} \Omega$ |
| Pollution degree | 2 |
| Overvoltage category | II |
| Insulating material group | III |
| EMC compliance | unshielded |

Material

| | |
|-----------------------|---------------|
| Housing material | PUR |
| Contact body material | PA (UL94 V-0) |
| Contact material | CuZn (brass) |

Product data sheet

Miniature connectors



| | |
|---------------------|---|
| Product description | M16 Female angled connector, Contacts: 6, unshielded, moulded on the cable, IP68, PUR, black, 6 x 0.25 mm², 5 m |
| Area | series 425 |
| Part no. | 77 6434 0000 50006-0500 |

| | |
|-----------------|---------------------------|
| Contact plating | Au (gold) |
| REACH SVHC | None (No pollutants) |
| SCIP number | SCIP-number not available |

Declarations of conformity

| | |
|-----------------------|--|
| Low Voltage Directive | 2014/35/EU (EN 60204-1:2018;EN 60529:1991) |
| RoHS Directive | 2011/65/EU (EN 50581:2012) |

Cable data - Structure of the cable

| | |
|------------------------|--------------------------|
| Cable diameter | 5.0 mm |
| Cross section | 6 x 0.25 mm ² |
| Sheath material | PUR |
| Single-lead insulation | PP9Y halogen-free |
| Single-lead structure | 32 x 0.10 mm |
| Cable color | black |

Cable data - Mechanical properties

| | |
|------------------------------|--------|
| Bending radius, fixed cable | 5 x Ø |
| Bending radius, moving cable | 10 x Ø |

Cable data - Thermal properties

| | |
|---|----------------|
| Temperature range cable in move from/to | -25 °C / 80 °C |
| Temperature range cable fixed from/to | -50 °C / 80 °C |

Cable data - Other features

| | |
|--------------|-----|
| Halogen free | yes |
|--------------|-----|

| | |
|---------------------|---|
| Product description | M16 Female angled connector, Contacts: 6, unshielded, moulded on the cable, IP68, PUR, black, 6 x 0.25 mm², 5 m |
| Area | series 425 |
| Part no. | 77 6434 0000 50006-0500 |

Security notices

The connector must not be plugged or unplugged under load. Non-observance and improper use can result in personal injury.

The connectors have been developed for applications in plant engineering, control and electrical equipment construction. The user is responsible for checking whether the connectors can also be used in other areas of application.

To protect against unintentional opening of the connector, the thread between the housing and the connector head must be secured with a suitable cyanoacrylate adhesive when used in circuits with voltages dangerous to the touch. This does not apply to connectors used in SELV and PELV circuits according to IEC 61140 (EN 61140, VDE 0140-1).

Connectors which are used in circuits with voltages dangerous to the touch may only be installed and used by, or under the supervision of, persons with electrical engineering training, taking into account the applicable regulations and standards.

The user must take suitable safety precautions to ensure that the connector cannot be accidentally disconnected.

Plug connectors with enclosure protection IP67 and IP68 are not suitable for use under water. When used outdoors, the plug connectors must be protected separately against corrosion. For further information on the IP protection classes, please refer to the "Technical Information" download centre.

The plug connector is not suitable for mains voltages. Please observe the pollution degree and the overvoltage category. For further information, please refer to the download center "Technical Information".

To lock the cable connector with the device connector, the threaded ring is tightened "hand-tight" (approx. 60 cNm).